

SPRING SUMMER 2010



LYLE & SCOTT

CLUB



SPRING SUMMER 2010

STYLE INDEX

MENSWEAR

KNITWEAR

JE605C02	3
JE606C02	4
JE758C02	4
JE760C02	2
JE796C02	3
JE797C02	3
JE798C02	4
JE799C02	5
JE822C02	4
JE900C02	2
JF700C02	5
JF701C02	5
MT787C02	2

POLO SHIRTS

KD634C02	6
KH629C02	6
KH798C02	6
KH799C02	7
KH800C02	7
KH801C02	8
KH802C02	8
KH803C02	9
KH804C02	8
KH805C02	9
KH806C02	9

OUTERWEAR

KL767C02	10
KL768C02	10
KL769C02	10
KL770C02	11
KL771C02	11

TROUSERS

KA861C02	11
KA862C22	12
KA863C22	12

WOMENSWEAR

KNITWEAR

JE105C22	14
JE106C22	15
JE219C22	14
JE227C22	14
JE228C22	15
JE229C22	15
JE230C22	14
JE407C22	15

POLO SHIRTS

KH123C22	16
KH125C22	17
KH126C22	18
KH127C22	18
KH128C22	17
KH129C22	17
KH130C22	16
KH131C22	18
KH132C22	18
KH133C22	17
KP169C22	16
KP170C22	16

TROUSERS / SHORTS

KK341C22	19
KK342C22	19
KK343C22	19
KK344C22	19
KK345CS1	21

OUTERWEAR

KK006C22	20
KK007C22	20
KK008C22	21
KK009C22	21
KL056C22	20

ACCESSORIES

MENS AND WOMENS

LS440C22	22
LS441C22	22
LS442C22	22
LS449C22	22
LS550C22	22



M E N S W E A R



LYLE & SCOTT
CLUB

MT787C02

MACHINE WASHABLE
LAMBSWOOL

- Classic vee neck pullover
- Green Eagle badge on left chest

Sizes S-XXL



CADET BLUE W90

MT787C02 COLOUR OPTIONS:



JE760C02

FINE GAUGE PIMA COTTON

- Classic vee neck pullover
- Green Eagle badge on left chest

Sizes S-XXL



BRIGHT BLUE G07

JE760C02 COLOUR OPTIONS:



JE900C02

FINE GAUGE PIMA COTTON

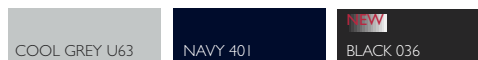
- Vee neck waistcoat
- Green Eagle badge on left chest

Sizes S-XXL



COOL GREY U63

JE900C02 COLOUR OPTIONS:





CADET BLUE/2
W90828



CHARCOAL MELANGE/1
W91827

JE605C02

FINE GAUGE PIMA COTTON

- Vee neck slipover
- Exploded argyle and raker front
- Green Eagle badge on left chest

Sizes S-XXL



CADET BLUE/2
W90828

COOL GREY MELANGE/1
W84827

BLACK/3
036829

JE796C02

FINE GAUGE PIMA COTTON

- Vee neck pullover
- Argyle front and sleeves, plain back
- Green Eagle badge on left chest

Sizes S-XXL



NAVY/1
401827



CHARCOAL MELANGE/2
W91828

JE797C02

FINE GAUGE PIMA COTTON

- Half zip funnel neck raglan pullover
- Argyle front and tipped trims
- Green Eagle badge on left chest

Sizes S-XXL

JE758C02

FINE GAUGE PIMA COTTON

- Half zip turtle neck pullover
- Inside back neck stripe detail
- Green Eagle badge on left chest

Sizes S-XXL



NAVY 401

JE758C02 COLOUR OPTIONS:

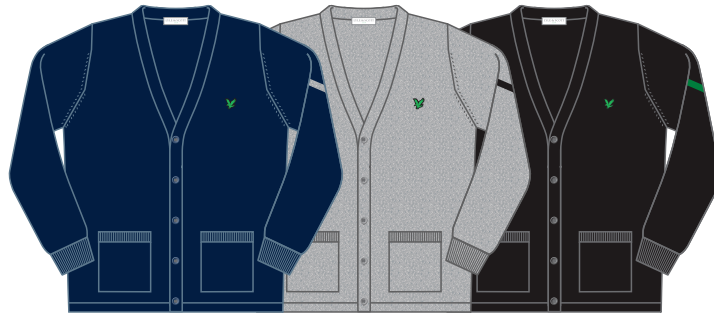


JE822C02

FINE GAUGE PIMA COTTON

- Vee neck cardigan
- Two pockets
- TContrast stripe on left sleeve
- Green Eagle badge on left chest

Sizes S-XXL



NAVY/1
401827

COOL GREY MELANGE/2
W84828

BLACK/3
036829

JE798C02

FINE GAUGE PIMA COTTON

- Vee neck moss stitch pullover
- Neck trim stripe detail
- Green Eagle badge on left chest

Sizes S-XXL



NAVY/1
401827



CHARCOAL MELANGE/2
W91828

JE606C02

FINE GAUGE PIMA COTTON

- Vee neck moss stitch slipover
- Stripe detail on trims
- Green Eagle badge on left chest

Sizes S-XXL



COOL GREY MELANGE
W84

CHARCOAL MELANGE
W91

NAVY 401 **NEW**



NAVY/2
401828



BLACK/1
036827

JE799C02 

50% COTTON 50% COOLMAX

- Crew neck performance pullover
- Cover stitch and rib detailing
- Nylon elbow patches
- Green Eagle badge on left chest

Sizes S-XXL



NAVY/2
401828



BLACK/1
036827

JF700C02 

50% COTTON 50% COOLMAX

- Half zip funnel neck performance pullover
- Waterproof zip
- Cover stitch and rib detailing
- Nylon elbow patches
- Green Eagle badge on left chest

Sizes S-XXL



BRIGHT BLUE G07

COOL GREY
MELANGE
W84

BLACK 036

DARK EAGLE
GREEN W92

JF701C02 

50% COTTON 50% COOLMAX

- Vee neck performance pullover
- Raglan sleeve with rib detail
- Green Eagle badge on left chest

Sizes S-XXL

KH629C02

COTTON PIQUE

- Classic polo shirt
- Two button placket
- Green Eagle badge on left chest

Sizes S-XXL



BRIGHT BLUE G07

KH629C02 COLOUR OPTIONS:

LEMON 328	COOL GREY MELANGE W84	WHITE 626
PISTACHIO E12	LIGHT BLUE 305	PALE PINK 500
EAGLE GREEN U77	BRIGHT BLUE G07	DEEP RED 663
BLACK 036	NAVY 401	DARK CLARET E60
NEW JELLYBEAN 826	NEW GOSPEL U78	NEW DUSK 188

KD634C02

70% COTTON 30% POLYESTER

- Polo shirt with tailored collar
- Right chest twin pocket detail
- Green Eagle badge on left chest

Sizes S-XXL



GREY MARL 304

KD634C02 COLOUR OPTIONS:

GREY MARL 304	WHITE 626	NEW BRIGHT BLUE G07
CADET BLUE W90	BLACK 036	

KH798C02

STRETCH COTTON
95% COTTON 5% SPANDEX

- Polo shirt with tipped trims
- Three button placket
- Green Eagle badge on left chest

Sizes S-XXL



WHITE/1
6268287

COOL GREY MELANGE/3
W84829

CHARCOAL MELANGE/2
W91828



BRIGHT BLUE/3
G07829

DARK RED/2
N11828

BLACK/1
036827

KH800C02

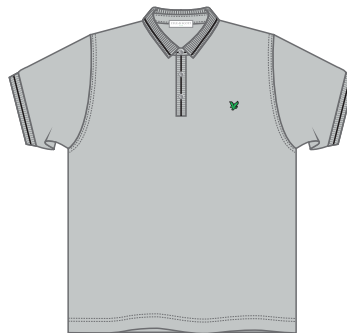
STRETCH COTTON
95% COTTON 5% SPANDEX

- Polo shirt with contrast collar stand and cuff detail
- Two piece button down collar
- Green Eagle badge on left chest

Sizes S-XXL



CADET BLUE/2
W90828



COOL GREY/1
U63827

KH799C02

95% POLYESTER 5% SPANDEX

- Polo shirt with stripe detail on collar and placket
- Two piece micro collar
- Green Eagle badge on left chest

Sizes S-XXL

KH804C02

COTTON MESH STRIPE

- Mesh pique stripe polo shirt
- Snap fastening placket
- Green Eagle badge on left chest

Sizes S-XXL



COOL GREY MELANGE/2
W84828



CHARCOAL MELANGE/1
W91827

KH801C02

COTTON JERSEY

- Stripe polo shirt
- Two piece button down collar with herringbone tape detail
- Green Eagle badge on left chest

Sizes S-XXL



WHITE/1 626827



COOL GREY MELANGE/2
W84828

KH802C02

COTTON JERSEY

- Fine stripe polo shirt
- Three button placket with vertical stripe detail inside
- Green Eagle badge on left chest

Sizes S-XXL



NAVY/1
401827



BLACK/2
036828



WHITE/2
626828



NAVY/1 401827

KH803C02

COTTON MESH JERSEY

- Zip neck mesh polo shirt
- Tipping detail on trims
- Waterproof zip
- Green Eagle badge on left chest

Sizes S-XXL



WHITE/2
626828



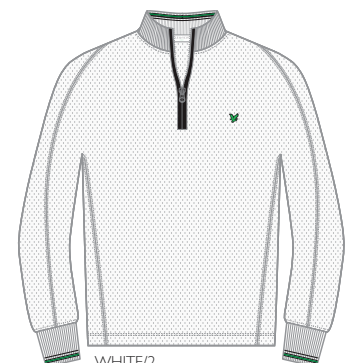
NAVY/1
401827

KH805C02

COTTON MESH JERSEY

- Zip neck mesh tee shirt
- Tipping detail on trims
- Waterproof zip
- Ergonomic seam detail
- Green Eagle badge on left chest

Sizes S-XXL



WHITE/2
626828



NAVY/1
401827

KH806C02

COTTON MESH JERSEY

- Zip neck mesh long sleeve shirt
- Tipping detail on trims
- Waterproof zip
- Ergonomic seam detail
- Green Eagle badge on left chest

Sizes S-XXL

KL767C02

COTTON MESH JERSEY

- Hooded zip through mesh sweatshirt
- Two front pockets
- Waterproof zip
- Thumbhole cuff detail
- Green Eagle badge on left chest

Sizes S-XXL



COOL GREY MELANGE/2
W84828



BLACK/1
036827

KL768C02

STRETCH COTTON
97% COTTON 3% SPANDEX

- Funnel neck zip through pique sweatshirt
- Two front welt pockets
- Waterproof zip with nylon zip guard
- Green Eagle badge on left chest

Sizes S-XXL



CADET BLUE/2
W90828



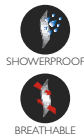
BLACK/1
036827

KL769C02

POLYESTER NYLON TWILL
91% POLYESTER 9% NYLON

- Zip through harrington jacket
- Two front flap pockets with snap fastening
- Action back detail
- Waterproof zip with zip guard
- Fleece collar stand
- Green Eagle badge on left chest

Sizes S-XXL



CADET BLUE W90



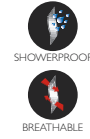
BLACK 036



CADET BLUE W90



BLACK 036



KL770C02

91% POLYESTER 9% NYLON

- Lightweight showerproof jacket with mesh lining
- Two front welt pockets
- Waterproof zip with zip guard
- Fleece lined funnel neck
- Front and back vents
- Underarm waterproof zip detail with mesh gusset
- Green Eagle badge on left chest

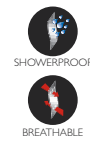
Sizes S-XXL



CADET BLUE W90



DARK GREY 057



KL771C02

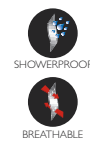
91% POLYESTER 9% NYLON

- Half sleeve packaway jacket with mesh lining
- Chest pocket with zip
- Front and right side seam waterproof zips
- Fleece lined funnel neck
- Back mesh vent
- Memory shape fabric
- Green Eagle badge on left chest

Sizes S-XXL



BLACK 036



KA861C02

91% POLYESTER 9% NYLON

- Lightweight showerproof trouser
- Welt pockets
- Waterproof ankle zips
- Elastic waist with inside grip tape
- Waist cord adjusters
- Green Eagle badge above left hem

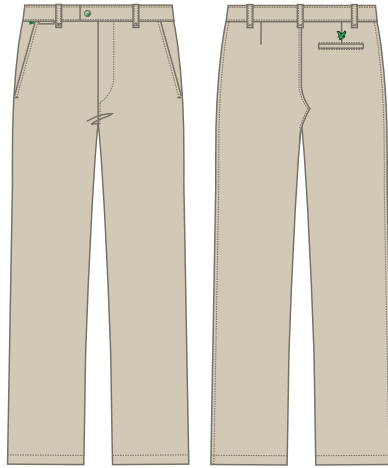
Sizes S-XXL

KA862C22S/R/L

STRETCH COTTON
98% COTTON 2% ELASTANE

- Flat front trouser
- Two front side pockets, one back pocket.
- Ticket pocket with green tee
- Internal piping detail at waistband
- Rubber glove gripper inside back pocket
- Green Eagle badge above back pocket

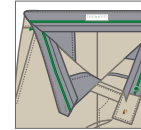
Sizes 30" - 40"



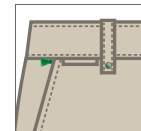
STONE 568



BLACK 036



INTERNAL PIPING
DETAIL



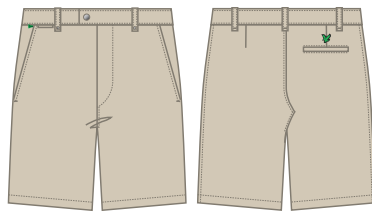
GREEN TEE
DETAIL

KA863C22

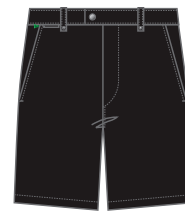
STRETCH COTTON
98% COTTON 2% ELASTANE

- Flat front shorts
- Two front side pockets, one back pocket.
- Ticket pocket with green tee
- Internal piping detail at waistband
- Rubber glove gripper inside back pocket
- Green Eagle badge above back pocket

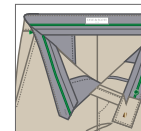
Sizes 30" - 40"



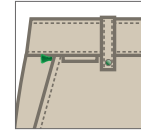
STONE 568



BLACK 036



INTERNAL PIPING
DETAIL



GREEN TEE
DETAIL



WOMENSWEAR



LYLE & SCOTT
CLUB

JE219C22

FINE GAUGE PIMA COTTON

- Classic vee neck pullover
- Green Eagle badge on left chest

Sizes S-LL



BRIGHT PINK W89

JE219C22 COLOUR OPTIONS:



JE230C22

50% COTTON 50% COOLMAX

- Vee neck pullover
- Neck trim tuck detail
- Green Eagle badge on left chest

Sizes S-LL



BRIGHT PINK W89

JE230C22 COLOUR OPTIONS:



JE227C22

FINE GAUGE PIMA COTTON

- Vee neck raglan pullover
- Argyle front
- Shoulder tuck detail
- Green Eagle badge on left chest

Sizes S-LL



BRIGHT PINK/2
W89828

COOL GREY MELANGE/3
W84829

CHARCOAL MELANGE/1
W91827

JE105C22

FINE GAUGE PIMA COTTON

- Vee neck slipover
- All over mini argyle
- Green Eagle badge on left chest

Sizes S-LL



PALE PINK/2
500828

COOL GREY MELANGE/1
W84827

COOL GREY MELANGE/3
W84829



WHITE 626



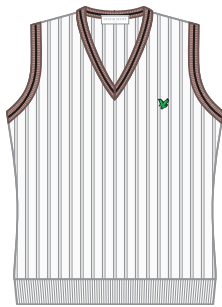
COOL GREY MELANGE W84

JE228C22

FINE GAUGE PIMA COTTON

- Vee neck rib pullover
- Neck trim stripe detail
- Green Eagle badge on left chest

Sizes S-LL



WHITE 626



COOL GREY MELANGE W84

JE106C22

FINE GAUGE PIMA COTTON

- Vee neck rib slipover
- Neck and arm trim stripe detail
- Green Eagle badge on left chest

Sizes S-LL



PALE PINK 500

COOL GREY MELANGE W84

CHARCOAL MELANGE W91

JE407C22

EXTRAFINE PIMA COTTON

- Vee neck cardigan
- Front and armhole fashioning detail
- Green Eagle badge on left chest

Sizes S-LL



WHITE/3 626829

COOL GREY MELANGE/3 W84828

BLACK/1 036827

JE229C22

EXTRAFINE PIMA COTTON

- Short sleeve knitted polo
- Contrast collar and stripe cuff detail
- Armhole fashioning detail
- Green Eagle badge on left chest

Sizes S-LL

KPI69C22

COTTON PIQUE

- Feminine fit polo shirt
- Two button placket
- Green Eagle badge on left chest

Sizes S-LL



BRIGHT PINK W89

KPI69C22 COLOUR OPTIONS:

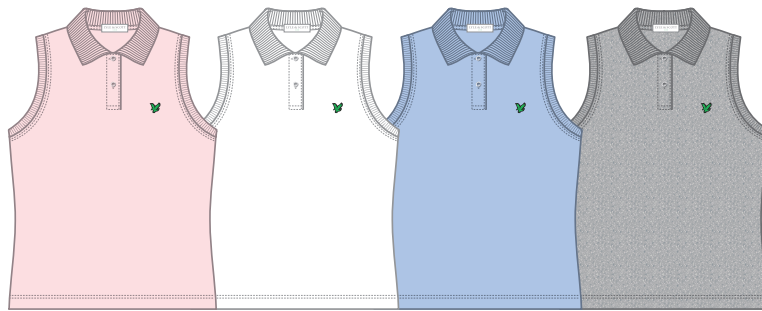
LEMON 328	WHITE 626	PALE PINK 500
PISTACHIO E12	COOL GREY MELANGE W84	BRIGHT PINK W89
EAGLE GREEN U77	LIGHT BLUE 305	DEEP RED 663
BLACK 036	NAVY 401	DARK CLARET E60

KPI70C22

COTTON PIQUE

- Feminine fit sleeveless polo shirt
- Two button placket
- Green Eagle badge on left chest

Sizes S-LL



PALE PINK 500

WHITE 626

LIGHT BLUE 305

COOL GREY MELANGE W84

KHI23C22

STRETCH COTTON PIQUE
95% COTTON 5% SPANDEX

- Raglan sleeve stripe polo shirt
- Knit collar with stand
- Cotton drill at stand
- Vertical stripe inside placket
- Green Eagle badge on left chest

Sizes S-LL



WHITE/BRIGHT PINK W89

WHITE/COOL GREY MELANGE W84

WHITE/PISTACHIO E12

KHI30C22

STRETCH COTTON PIQUE
95% COTTON 5% SPANDEX

- Short sleeve polo dress
- Contrast tipping on trims
- Green Eagle badge on left chest

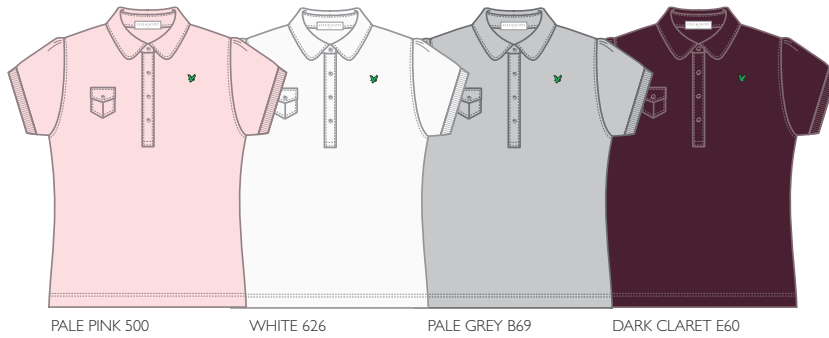
Sizes S-LL



WHITE/3
626829

DARK RED/1
N11827

BLACK/2
036828



PALE PINK 500

WHITE 626

PALE GREY B69

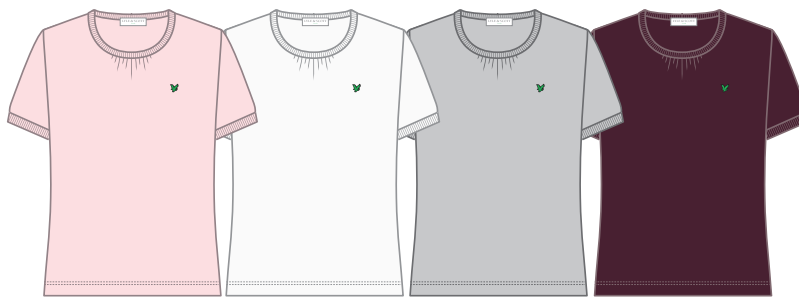
DARK CLARET E60

KHI25C22

COTTON /MODAL PIQUE
60% COTTON 40% MODAL

- Feminine fit polo shirt
- Rounded two piece collar
- Right chest pocket detail
- Green Eagle badge on left chest

Sizes S-LL



PALE PINK 500

WHITE 626

PALE GREY B69

DARK CLARET E60

KHI28C22

COTTON /MODAL PIQUE
60% COTTON 40% MODAL

- Round neck tee shirt
- Neck trim tuck detail
- Green Eagle badge on left chest

Sizes S-LL



BRIGHT PINK/4
W89830

WHITE/1
626827

PISTACHIO/3
E12829

CADET BLUE/2
W90829

KHI33C22

COTTON /MODAL PIQUE
60% COTTON 40% MODAL

- Raglan sleeve polo shirt
- Rounded knit collar and sleeve tuck stitch detail
- Contrast tipping on trims
- Green Eagle badge on left chest

Sizes S-LL



WHITE/1
626827



PALE GREY/2
B69828

KHI29C22

COTTON /MODAL PIQUE
60% COTTON 40% MODAL

- Fine stripe polo shirt
- Button down knit collar with contrast stand
- Shoulder epaulette detail
- Green Eagle badge on left chest

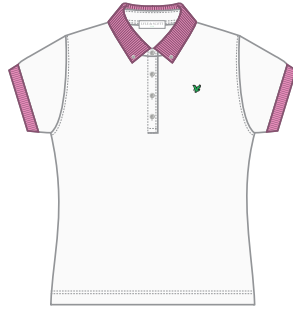
Sizes S-LL

KHI31C22

STRETCH COTTON PIQUE
95% COTTON 5% SPANDEX

- Short sleeve polo shirt
- Button down contrast knit collar with stand
- Contrast cuff detail
- Green Eagle badge on left chest

Sizes S-LL



WHITE/1
626827



COOL GREY MELANGE/2
W84828

KHI32C22

95% POLYESTER 5% SPANDEX

- Short sleeve zip neck polo shirt
- Stripe cuff detail
- Shoulder tuck detail
- Green Eagle badge on left chest

Sizes S-LL



COOL GREY/1
U63827



MALVE/2
388828

KHI26C22

COTTON MESH JERSEY

- Zip neck mesh tee shirt
- Tipping detail on trims
- Waterproof zip
- Ergonomic seam detail
- Green Eagle badge on left chest

Sizes S-LL



WHITE/2
626828



NAVY/1
401827

KHI27C22

COTTON MESH JERSEY

- Mesh polo shirt
- Tipping detail on trims
- Ergonomic seam detail
- Green Eagle badge on left chest

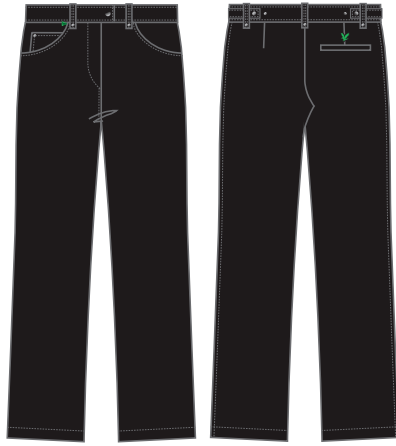
Sizes S-LL



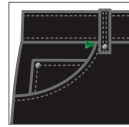
WHITE/2
626828



NAVY/1
401827



BLACK 036



GREEN TEE DETAIL



INTERNAL PIPING DETAIL

KK344C22 COLOUR OPTIONS:

WHITE 626	TAUPE 577
BLACK 036	DARK CLARET E60

KK344C22S/R/L

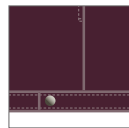
STRETCH COTTON
98% COTTON 2% ELASTANE

- Flat front trouser
- Two front pockets, one back pocket
- Rubber glove gripper inside back pocket
- Ticket pocket with green tee
- Internal piping detail at waistband
- Green Eagle badge above back pocket

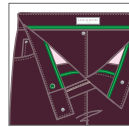
Sizes 8 - 18



DARK CLARET E60



HEM SNAP CLOSURE DETAIL



INTERNAL PIPING DETAIL

KK342C22 COLOUR OPTIONS:

WHITE 626	TAUPE 577
BLACK 036	DARK CLARET E60

KK342C22

STRETCH COTTON
98% COTTON 2% ELASTANE

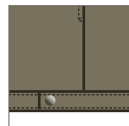
- Flat front shorts
- Two front pockets, one back pocket
- Hem snap closure detail
- Rubber glove gripper inside back pocket
- Ticket pocket with green tee
- Internal piping detail at waistband
- Green Eagle badge above back pocket

Sizes 8 - 18

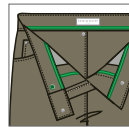
Length 44cms



TAUPE 577



HEM SNAP CLOSURE DETAIL



INTERNAL PIPING DETAIL

KK341C22 COLOUR OPTIONS:

WHITE 626	TAUPE 577
BLACK 036	DARK CLARET E60

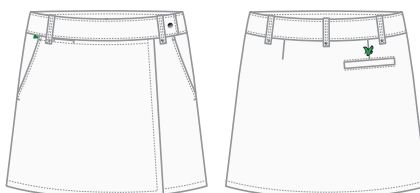
KK341C22

STRETCH COTTON
98% COTTON 2% ELASTANE

- Flat front capri pants
- Two front pockets, one back pocket
- Hem snap closure detail
- Rubber glove gripper inside back pocket
- Ticket pocket with green tee
- Internal piping detail at waistband
- Green Eagle badge above back pocket

Sizes 8 - 18

Length 76.5cms



WHITE 626



INTERNAL PIPING DETAIL

KK343C22 COLOUR OPTIONS:

WHITE 626	TAUPE 577
BLACK 036	DARK CLARET E60

KK343C22

STRETCH COTTON
98% COTTON 2% ELASTANE

- Wrap over skirt
- Two front pockets, one back pocket
- Rubber glove gripper inside back pocket
- Ticket pocket with green tee
- Internal piping detail at waistband
- Mesh short lining
- Green Eagle badge above back pocket

Sizes 8 - 18

Length 48cms

KL056C22

STRETCH COTTON
97% COTTON 3% SPANDEX

- Funnel neck sweat-top
- Thumbhole cuff detail
- Waterproof zip
- Green Eagle badge on left chest

Sizes S-LL



CADET BLUE/2
W90828



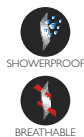
BLACK/1
036827

KK006C22

POLYESTER

- Zip through harrington jacket
- Two front flap pockets
- Waterproof zip with zip guard
- Action back detail
- Fleece collar stand
- Green Eagle badge on left chest

Sizes S-LL



CADET BLUE W90



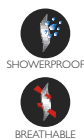
DARK GREY 057

KK007C22

POLYESTER

- Zip through jacket
- Two front welt pockets
- Waterproof zip with zip guard
- Fully mesh lined
- Fleece lined funnel neck
- Front and back vents
- Green Eagle badge on left chest

Sizes S-LL



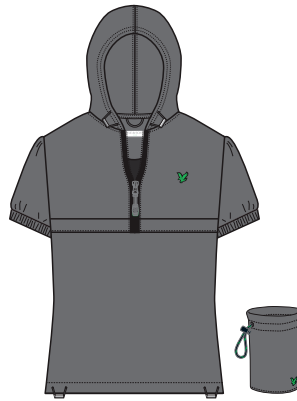
CADET BLUE W90

DARK RED N11

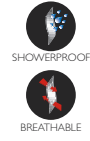
BLACK 036



CADET BLUE W90



DARK GREY 057



KK008C22

POLYESTER

- Lightweight short sleeve shower proof packaway hooded jacket
- Waterproof zip
- Chest flap with pocket
- Front and back vents
- Back vent and elastic waist detail
- Memory shape fabric
- Green Eagle badge on left chest

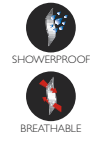
Sizes S-LL



CADET BLUE W90

DARK RED N11

BLACK 036

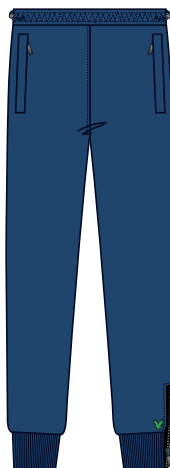


KK009C22

POLYESTER

- Funnel neck quilted gilet
- Two front zip pockets
- Waterproof zip
- Fleece lined funnel neck
- Stretch rib trims
- Green Eagle badge on left chest

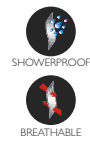
Sizes S-LL



CADET BLUE W90



BLACK 036



KK345CS1

POLYESTER

- Lightweight showerproof trouser
- Welt pockets
- Stretch rib hem with side waterproof zips
- Elastic waist with inside grip tape
- Waist cord adjusters
- Green Eagle badge above left hem

Sizes S-LL

LS449C22

COTTON

- Mens baseball cap
- Sandwich peak with green piping
- Green Eagle badge centre front

One size only



BLACK 036

LS550C22

COTTON

- Womens visor
- Green piping on peak
- Green Eagle badge centre front

One size only



BLACK 036

LS440C22

MESH WITH FLEECE LINING

- Unisex beanie hat
- Windproof fleece lining
- Green Eagle badge left side

One size only



BLACK 036

LS441C22

MESH WITH FLEECE LINING

- Womens headband
- Windproof fleece lining
- Green Eagle badge left side

One size only



BLACK 036

LS442C22

MESH WITH FLEECE LINING

- Unisex peaked beanie hat
- Windproof fleece lining
- Green Eagle badge left side

One size only



BLACK 036

MENS SIZE GUIDE

PULLOVERS AND SHIRTS

S	M	L	XL	XXL
36"-38"	39"-41"	42"-44"	45"-47"	48"-50"
92-97cms	99-104cms	107-112cms	115-120cms	122-127cms

TROUSERS

These are available in the following waist sizes

GB	30	32	34	36	38	40
CMS	76	81	86	91	97	102

WOMENS SIZE GUIDE

PULLOVERS AND SHIRTS

S	M	L	LL
32"-34"	35"-37"	38"-40"	41"-43"
81-86cms	89-94cms	97-102cms	104-109cms

TROUSERS

These are available in the following sizes:

GB	8	10	12	14	16	18
EURO	36	38	40	42	44	46



LYLE & SCOTT

SCOTLAND

Dunsdale Road, Selkirk, Scotland TD7 5EB. Tel: +44 (0)1750 724200
Fax: +44 (0)845 389 3228 E-mail: sales@lyleandscott.com www.lyleandscott.com

London Showroom
57 Broadwick Street, London W1F 9QS. Tel: +44 (0)207 200 2927 Fax: +44 (0)207 200 2978